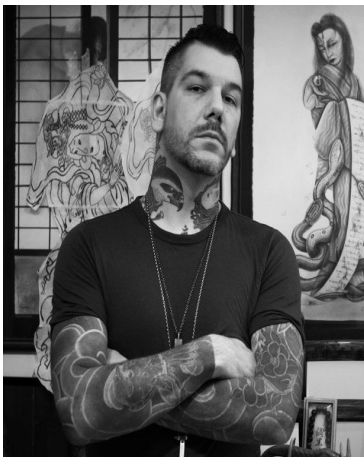




## Seduta Wolf Left Sculpted by Lupo Horiōkami

PRICE	€3,223
PRODUCT URL	<a href="#">View online</a>
MATERIALS	Wood, Ash
DESIGNERS	Lupo Horiōkami
DIMENSIONS (CM)	43 x 53 x 75 cm
DIMENSIONS (INCHES)	16.9 x 20.8 x 29.5 in
EDITION	Limited Edition
LEAD TIME	7-8 Weeks
ADDITIONAL INFORMATION	Made to order creations can be done: please contact us for any request.



### DESIGNER

## Lupo Horiōkami

Lupo Horiōkami is a conceptual design practice that weaves together the quiet elegance of Japanese aesthetics with the clarity of contemporary European design. Working across furniture, lighting, and collectible objects, the studio explores how form, material, and symbolism can intersect to create pieces that transcend functionality. Natural materials—wood, stone, paper, and metal—are treated with restraint and reverence, resulting in minimalist forms that carry layered meaning. Each work invites contemplation, often evoking themes of ritual, impermanence, and transformation. The dialogue between object and user becomes

central: pieces are not only used but experienced, offering moments of pause and reflection in the rhythm of daily life. Through this approach, the studio blurs the boundary between design and philosophy. Objects are conceived as vessels of atmosphere and emotion, embodying both simplicity and depth. In their balance of tradition and innovation, they propose a meditative vision of contemporary living—where beauty lies in essence, imperfection, and presence.