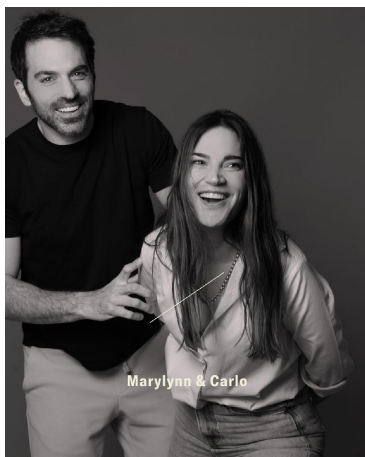


Jerry Table by Mary-Lynn & Carlo



PRICE	€6,500
PRODUCT URL	View online
DESIGNERS	Mary-Lynn & Carlo
DIMENSIONS (CM)	100 x 159 x 43 cm
DIMENSIONS (INCHES)	39.38 x 62.6 x 16.93 in
MATERIALS	Concrete, Fabric
EDITION	Limited Edition
LEAD TIME	7-8 Weeks
ADDITIONAL INFORMATION	Made to order creations can be done: please contact us for any request.



DESIGNER

Mary-Lynn & Carlo

Marylynn Massoud is a ceramic artist whose work celebrates distortion and imperfection as the natural outcomes of a handmade process. Trained at La Manufacture de Sèvres in France, her practice spans architectural interiors, sculptural works, and functional homeware. Since 2005, she has run a ceramics studio in Beirut in collaboration with Rasha Nawam, producing distinctive collections for domestic use. Her work has been presented internationally at galleries and art fairs including The Phillips Gallery, The Armory Show, Design Miami/Basel, Milan Design Week, and Piasa. Carlo Massoud is a Beirut-based designer and architect leading a multidisciplinary studio focused on

bespoke objects, and architectural interventions, informed by travel and cross-cultural exchange. Carlo has participated in major international fairs such as The Armory Show (New York), Southern Guild (Cape Town), Design Days Dubai, and Maison&Objet Paris. Since 2016, the Massoud siblings have collaborated on experimental design projects that reinterpret everyday objects through intuition and hands-on making. Their joint work merges Marylynn's expressive ceramics with Carlo's rigorous approach to form, most recently in The Elephant Project, a collection of oversized furniture in colored lightweight concrete, conceived and produced in Lebanon with local artisans.