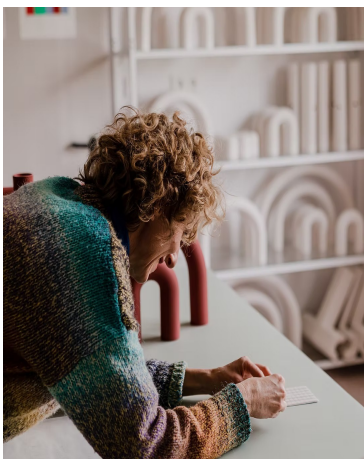




Ochre TRN A1 Pendant Lamp by Pani Jurek

PRICE	€620
PRODUCT URL	View online
DESIGNERS	Pani Jurek
DIMENSIONS (CM)	5 x 15 x 18 cm
DIMENSIONS (INCHES)	1.97 x 5.91 x 7.09 in
MATERIALS	Ceramic, Metal, Brass
EDITION	Limited Edition
LEAD TIME	7-8 Weeks
ADDITIONAL INFORMATION	Made to order creations can be done: please contact us for any request.



DESIGNER

Pani Jurek

Founded in 2010 by Magda Jurek, Pani Jurek operates at the intersection of fine art, craft, and design, where each object is conceived as both functional form and sculptural expression. A graduate in painting, Jurek approaches her work as a series of signs, installations, and compositions, embedding subtle meanings, personal memories, and quiet obsessions within her creations. Her objects are intimate reflections of lived experience, harmonizing disparate observations into forms that are at once poetic, tactile, and functional. Craftsmanship and materiality are central to the practice. Predominantly working in ceramics, Jurek respects the inherent possibilities and limitations of

in her studio under close supervision. Each object is designed to respond to its surroundings and the people who interact with it, creating a dynamic interplay between use, perception, and narrative. Beyond individual commissions, Pani Jurek engages in social and non-commercial initiatives, where the design process often catalyzes the creation of new, usable objects. Across all projects, interactivity, ergonomics, and material integrity remain paramount, allowing each work to transcend conventional function and exist as both an artful gesture and a living presence in everyday life.