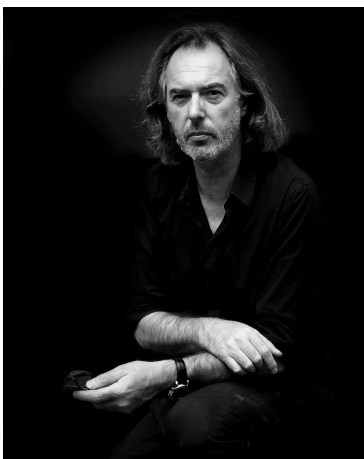


# Satinated Blade Console by Pol Quadens



PRICE	€11,000
PRODUCT URL	<a href="#">View online</a>
DESIGNERS	Pol Quadens
DIMENSIONS (CM)	30 x 210 x 95 cm
DIMENSIONS (INCHES)	11.81 x 82.67 x 37.40 in
LEAD TIME	7-8 Weeks
ADDITIONAL INFORMATION	Made to order creations can be done: please contact us for any request.
MATERIALS	Metal, Stainless Steel, Steel



DESIGNER

## Pol Quadens

Pol Quadens is a Belgian designer renowned for his thoughtful and playful approach to furniture and interior design, where minimalist silhouettes meet rigorous material exploration. Rejecting convention, Quadens has developed a language rooted less in wood—used only sparingly—and more in stainless steel, Corian®, carbon fibre, and stone. These materials, refined through experimentation, allow his work to embody both structural precision and sculptural elegance. Quadens' pieces reveal a balance of restraint and daring: clean lines distilled to their essence, surfaces honed to perfection, and forms that invite a tactile and spatial encounter. His

commitment to artisanal methods and hand-finishing ensures that each work is as much an object of craftsmanship as of design innovation. From his Brussels studio, Quadens creates limited editions and bespoke commissions in close collaboration with master craftspeople. His practice reflects a dialogue between tradition and forward-looking innovation, resulting in works that are at once timeless and progressive. Collectors and design connoisseurs worldwide seek out his creations for their clarity, endurance, and unmistakable identity.