

# AN INTERIOR

TOPICS

ISSUES

SUBSCRIBE

ABOUT

EVENTS

Global design platform Galerie  
Philia sets up shop in New York's  
iconic Walker Tower

# Penthouse Decor

By Adrian Madlener • Originally published as an Online Feature



As fixed brick-and-mortar spaces become less important, a growing number of established and emerging collectible art and design galleries are experimenting with new exhibition formats. Some are teaming up with real estate developers to create contextualized displays in luxury apartments. These win-win collaborations help the former demonstrate how their wares might situate in what are ostensibly collector homes, while the latter is able to stage their spaces in new, dynamic ways.



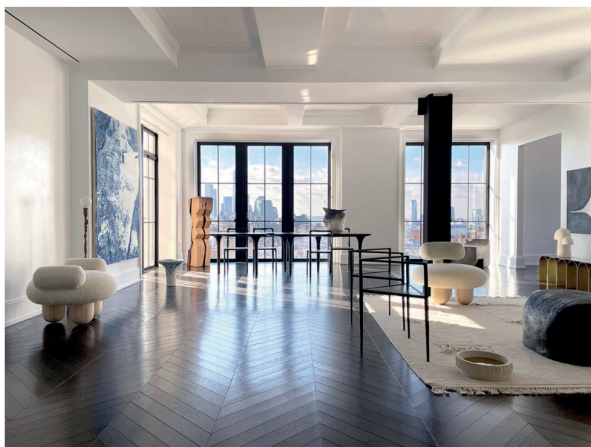
The twisted Landscape sofa by nea studio is flanked by Rooms' Life On Earth diabase stone stool. (Courtesy Galerie Philia)



Elisa Uberti's pink stoneware Opéra Lamp sits within the master suite shower, interacting with views of New York's One World Trade Center tower. (Courtesy Galerie Philia)

International platform Galerie Philia has just taken up residence in New York's historic Walker Tower. Integrating 70 works into a 5,000-square-foot, 18th-floor duplex, this contextualized display accentuates the luxury apartment's Art Deco detailing and stunning views. Works from the gallery's extensive roster of talents occupy an expansive living room, a full kitchen, an alcove dining room, four en-suite bedrooms, and even a shower with unobstructed views of Downtown Manhattan.





The exhibition occupies every room in the duplex but favors flow over clutter. (Courtesy Galerie Philia)



William Guillon's cast bronze Sweet Thing III lamp and one of Pietro Franceschini's Bling Bling chairs sit outside the dining alcove complete with floor to ceiling curtains, Evan Fay's Lawless fauteuil, and Rooms' Miami floor lamp. (Courtesy Galerie Philia)

“Black, white, and brass tones set the vibe in the main rooms,” said the show’s curator Italian architect-turned-designer Pietro Franceschini. “Primitive shapes and meticulously crafted materials bring out an ethereal character that is consistent throughout the apartment.” His cohesive intervention highlighting the gallery’s main aesthetic but also the main attributes of this restored apartment.



Laurène Guarnieri's Ombree mirror and Laurids Gallée's Green Console add color to one of two second floor bedrooms. (Courtesy Galerie Philia)



An oil and resin panel painting by Theo Pinto hangs above a colorful bed and a CC Tapis carpet. (Courtesy Galerie Philia)

Minimalist chairs by multi-hyphenated American designer Rick Owens play off of twisted sofas by New York architecture firm nea studio. One of Franceschini's own tectonic consoles props up a sculptural lamp by Italian ceramicist Elisa Uberti while copper-clad fixtures by Indian craftsman Paul Matter add dimension to the display.

Pops of color can be found in gradient paintings by Theo Pinto and resin sideboards by Laurids Gallée. On view through May 15, the Walker Tower exhibition demonstrates Galerie Philia's comprehensive offerings, which transcend stylistic and historical barriers. This display is emblematic of an industry shift toward, neolithic minimalism, earth toned color ways, natural materials, and rich textures.